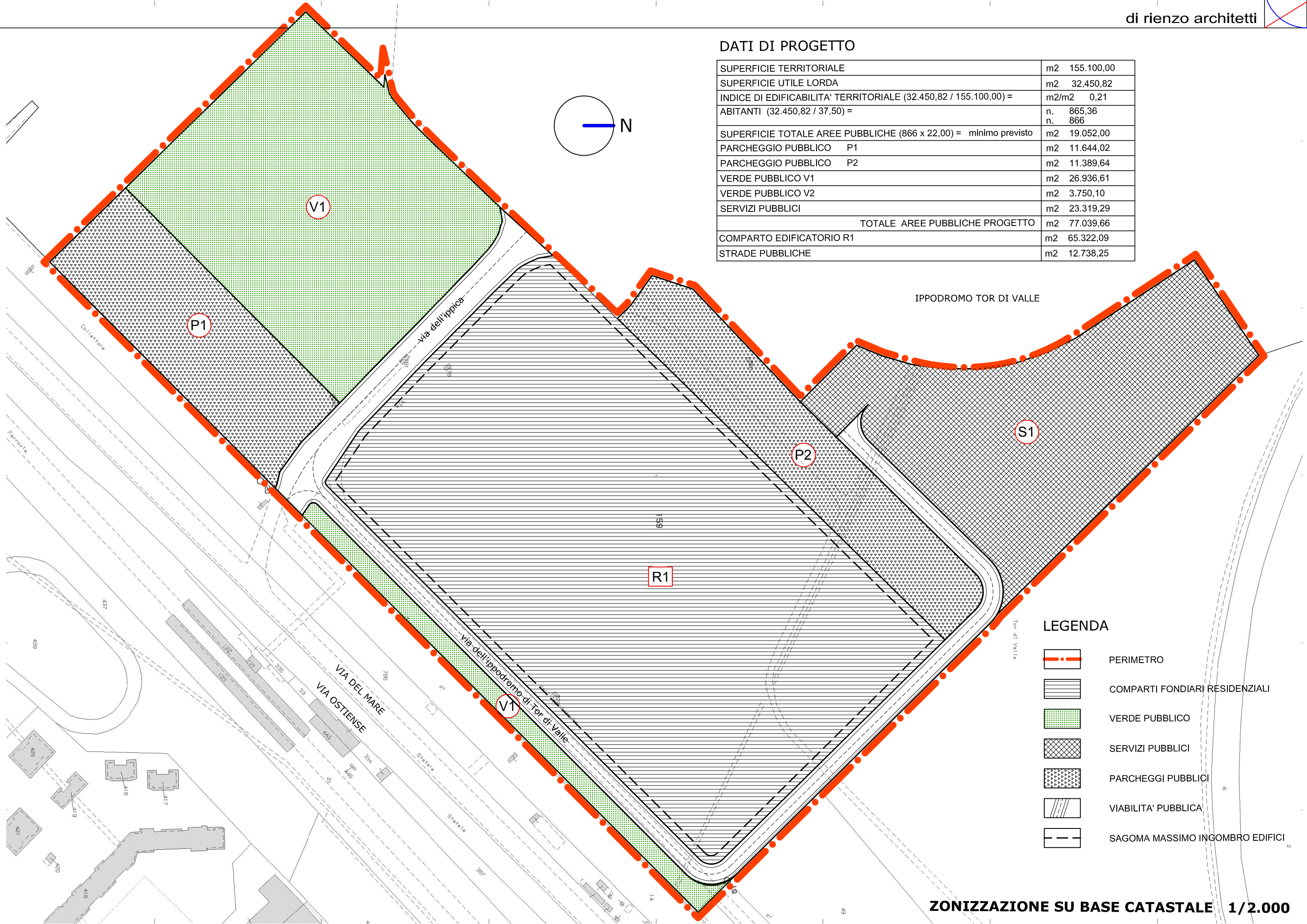



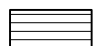




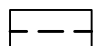
DATI DI PROGETTO

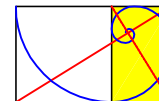
SUPERFICIE TERRITORIALE	m2	155.100,00
SUPERFICIE UTILE LORDA	m2	32.450,82
INDICE DI EDIFICABILITA' TERRITORIALE (32.450,82 / 155.100,00) =	m2/m2	0,21
ABITANTI (32.450,82 / 37,50) =	n.	865,36
	n.	866
SUPERFICIE TOTALE AREE PUBBLICHE (866 x 22,00) = minimo previsto	m2	19.052,00
PARCHEGGIO PUBBLICO P1	m2	11.644,02
PARCHEGGIO PUBBLICO P2	m2	11.389,64
VERDE PUBBLICO V1	m2	26.936,61
VERDE PUBBLICO V2	m2	3.750,10
SERVIZI PUBBLICI	m2	23.319,29
TOTALE AREE PUBBLICHE PROGETTO	m2	77.039,66
COMPARTO EDIFICATORIO R1	m2	65.322,09
STRADE PUBBLICHE	m2	12.738,25



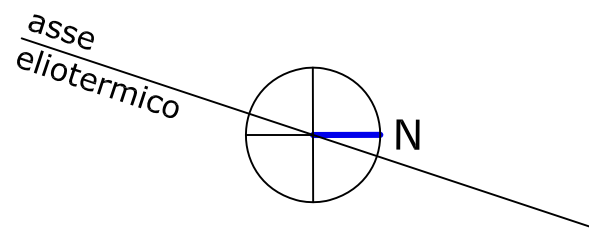
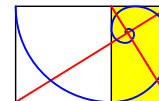
IPPODROMO TOR DI VALLE

LEGENDA

-  PERIMETRO
-  COMPARTI FONDIARI RESIDENZIALI
-  VERDE PUBBLICO
-  SERVIZI PUBBLICI
-  PARCHEGGI PUBBLICI
-  VIABILITA' PUBBLICA
-  SAGOMA MASSIMO INGOMBRO EDIFICI



IPPODROMO TOR DI VALLE

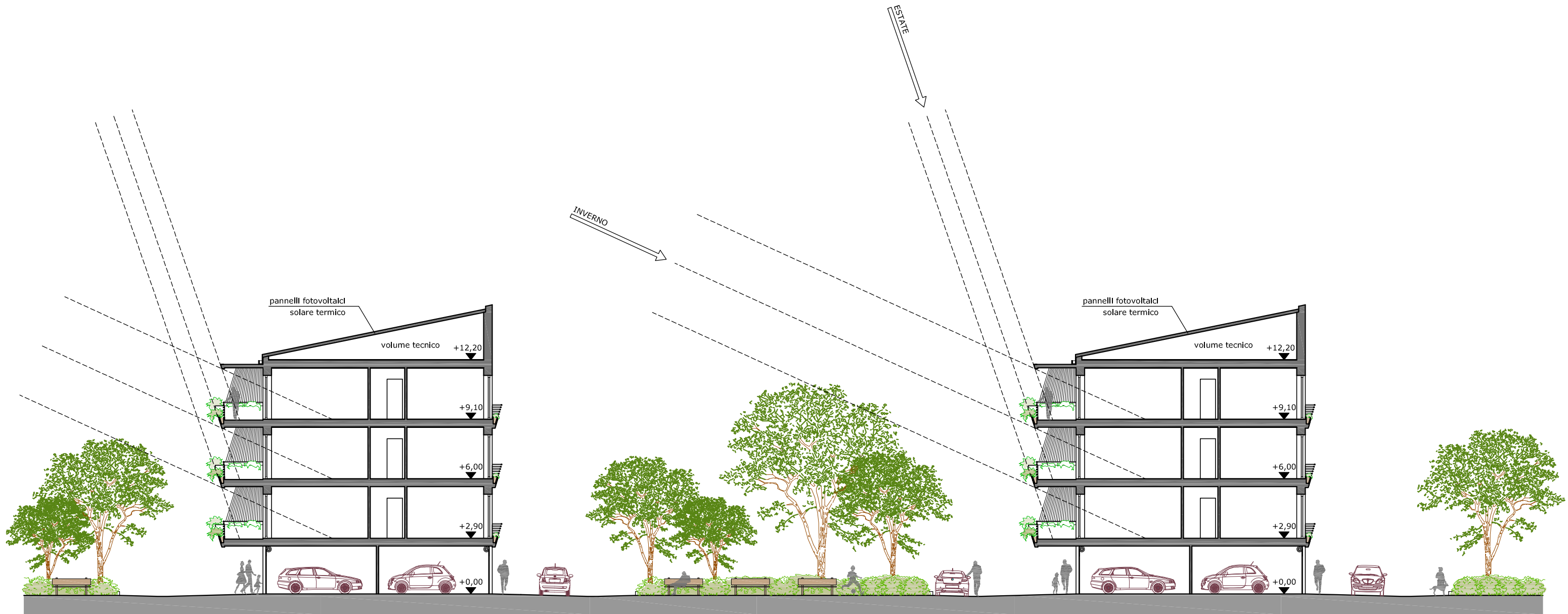
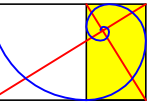


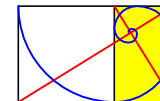
1 CENTRO CULTURALE
2 ASILO NIDO

IPPODROMO TOR DI VALLE



PLANIMETRIA PASSAGGI PEDONALI 1/2.000

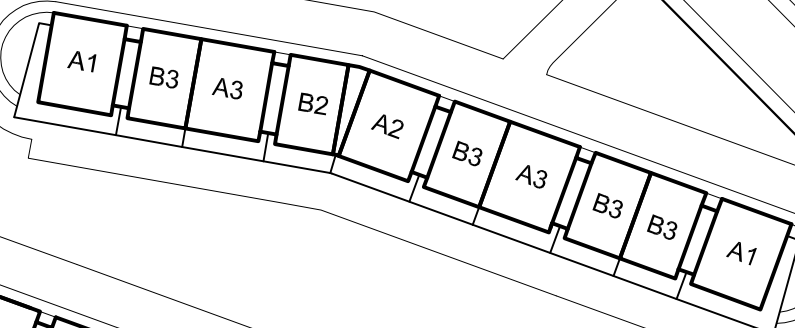




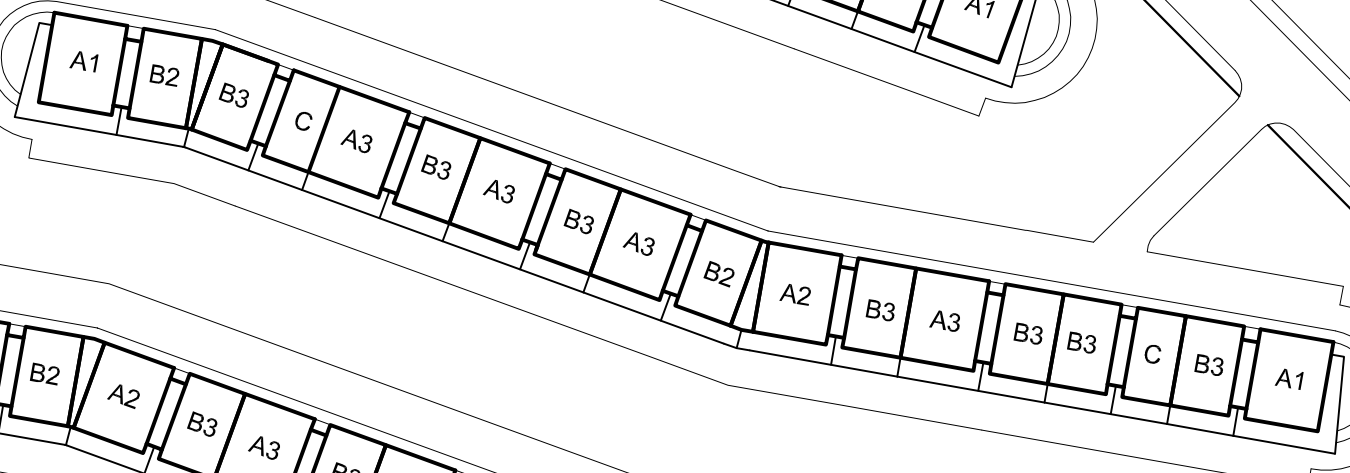
RIPARTIZIONE
TIPOLOGIE

- A1 24 alloggi
- A2 30 alloggi
- A3 84 alloggi
- B1 18 alloggi
- B2 39 alloggi
- B3 111 alloggi
- C 30 alloggi

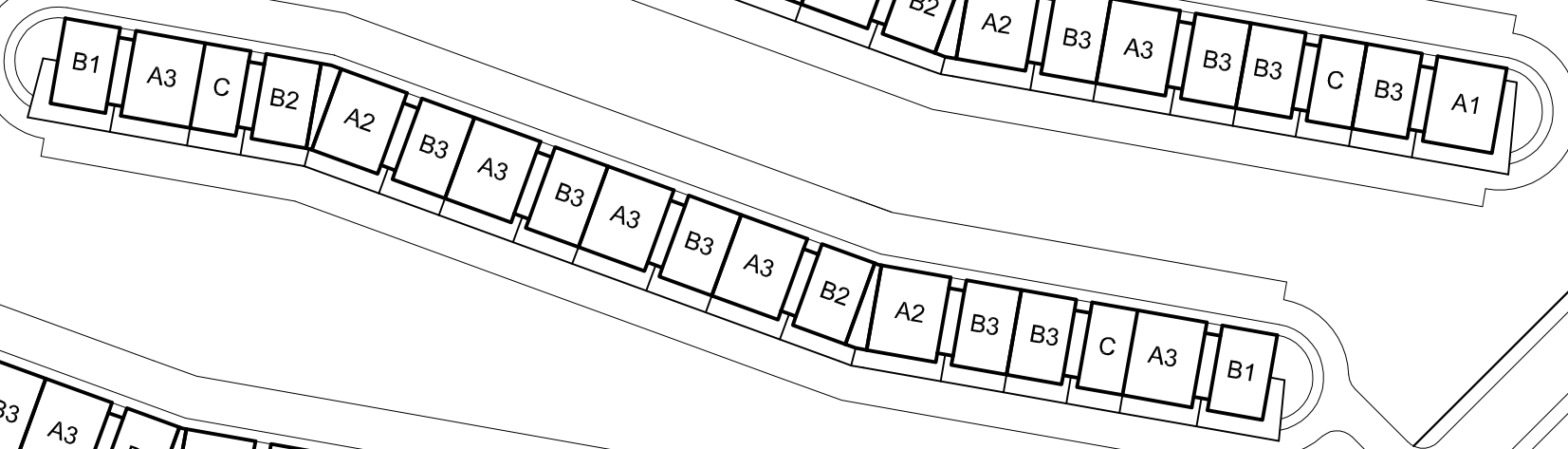
EDIFICIO LAMBDA



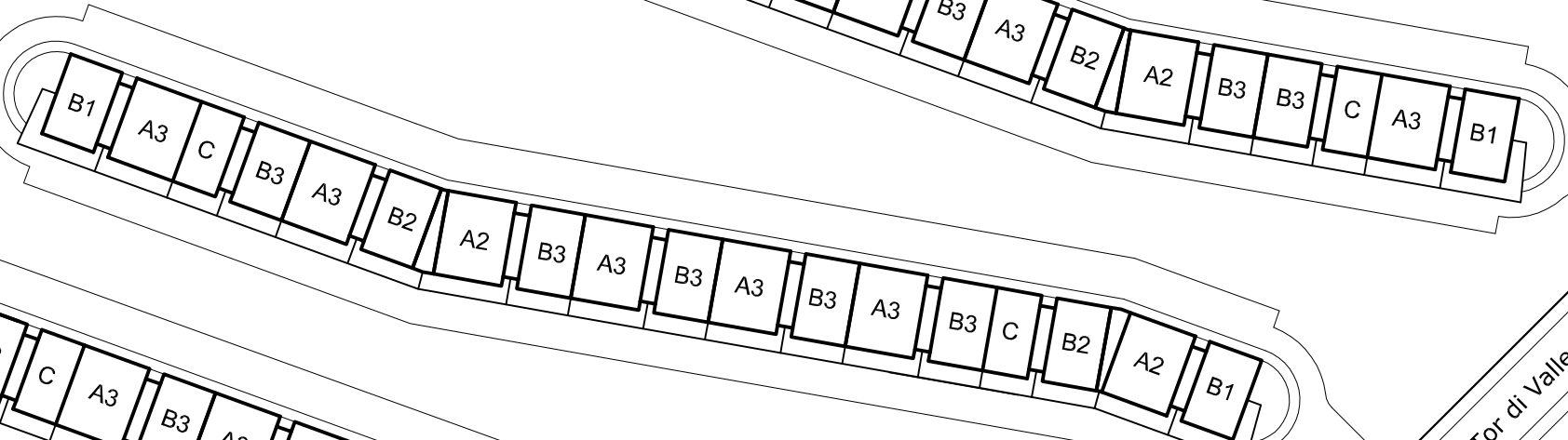
EDIFICIO KAPPA



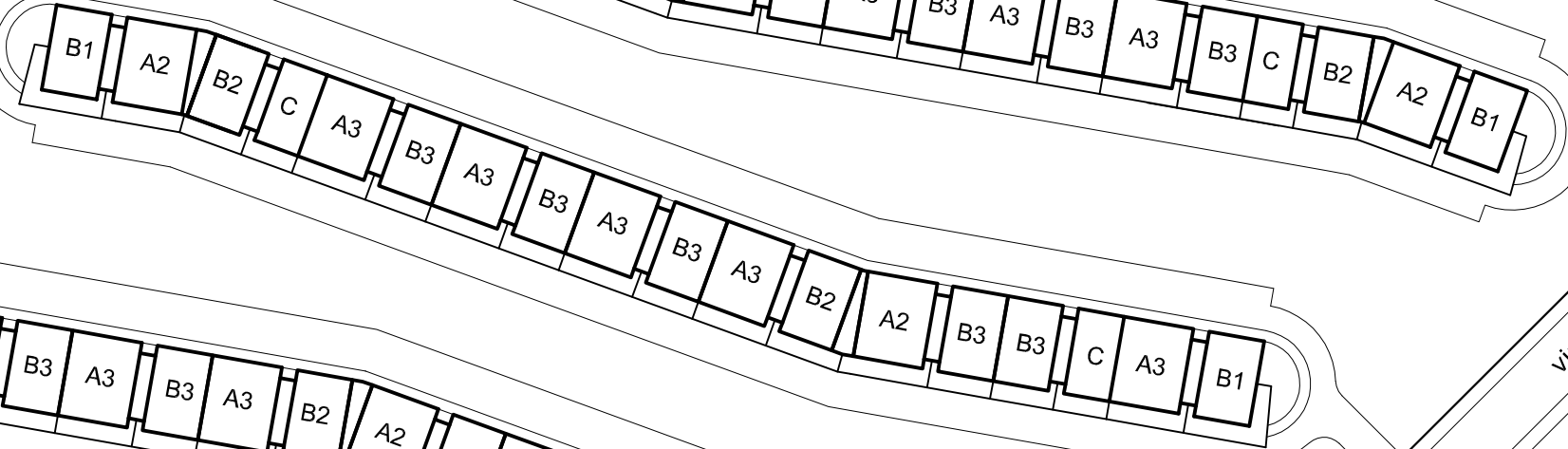
EDIFICIO EPSILON



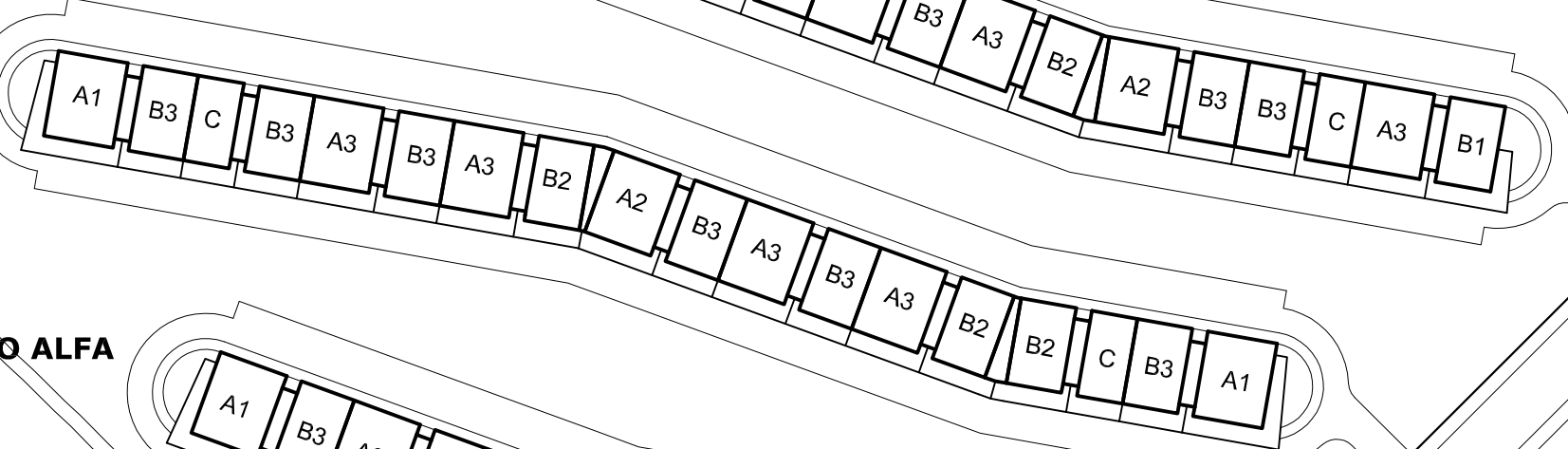
EDIFICIO DELTA



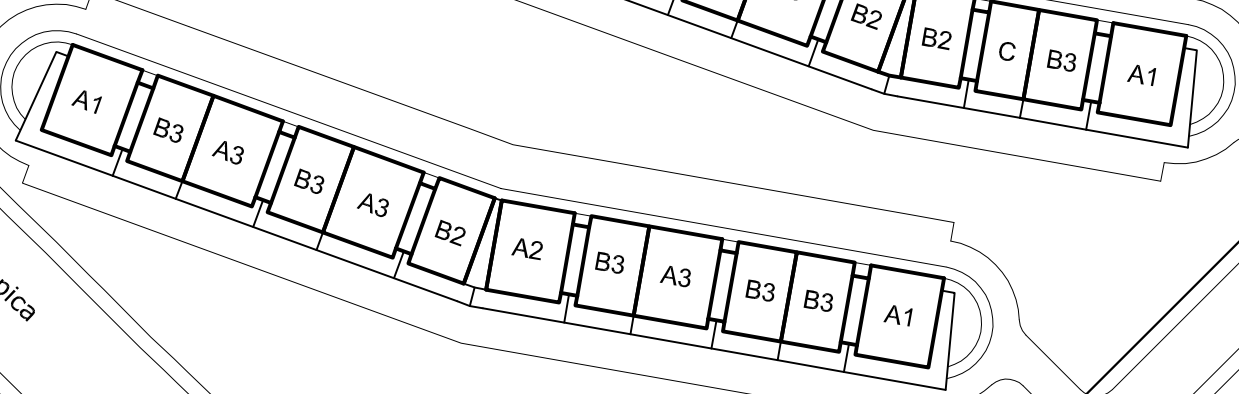
EDIFICIO GAMMA



EDIFICIO BETA



EDIFICIO ALFA

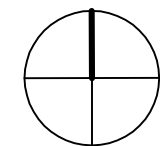


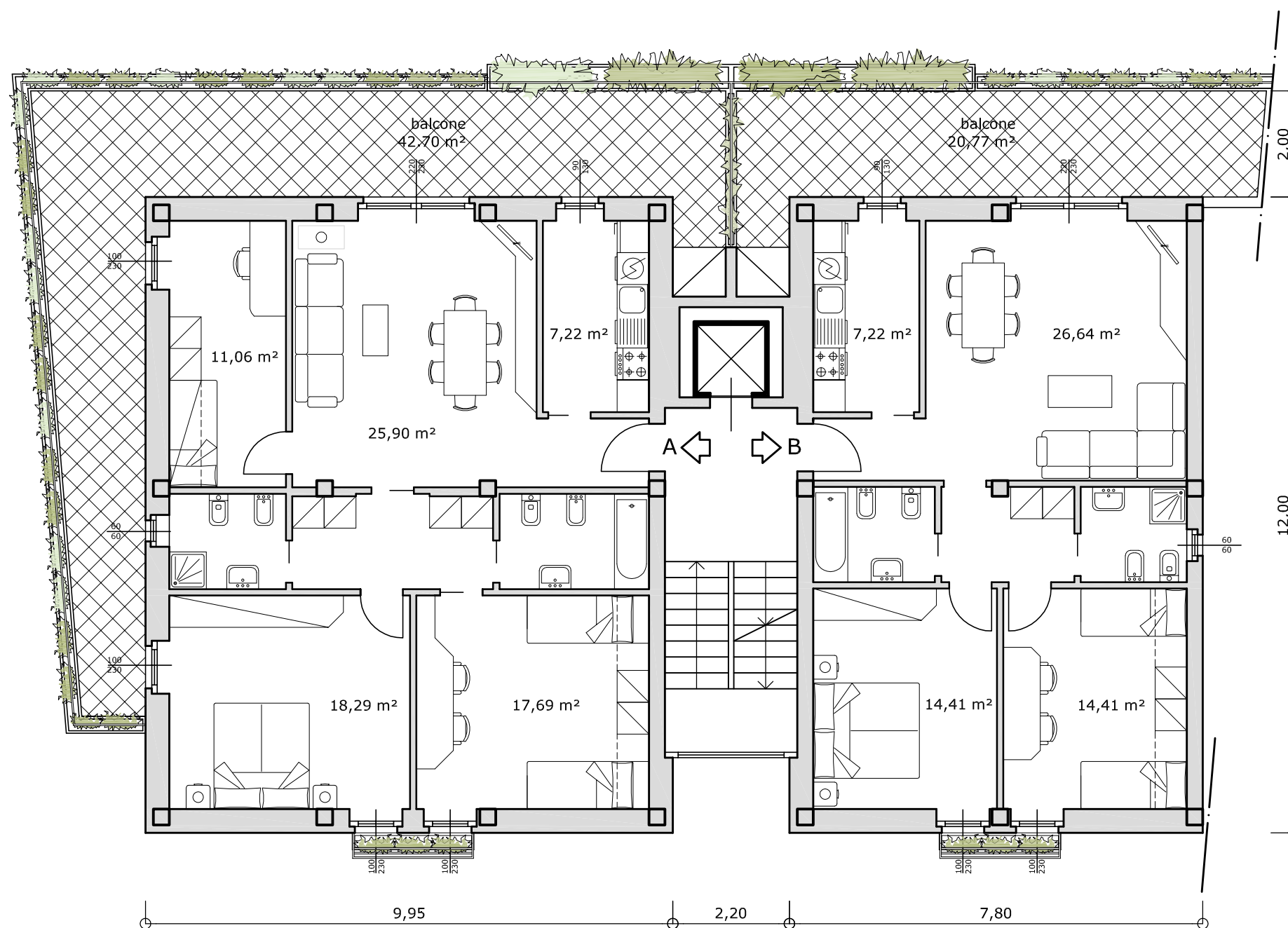
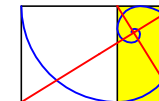
via dell'ippodromo di Tor di Valle

VIA DEL MARE

VIA OSTIENSE

via dell'ipica



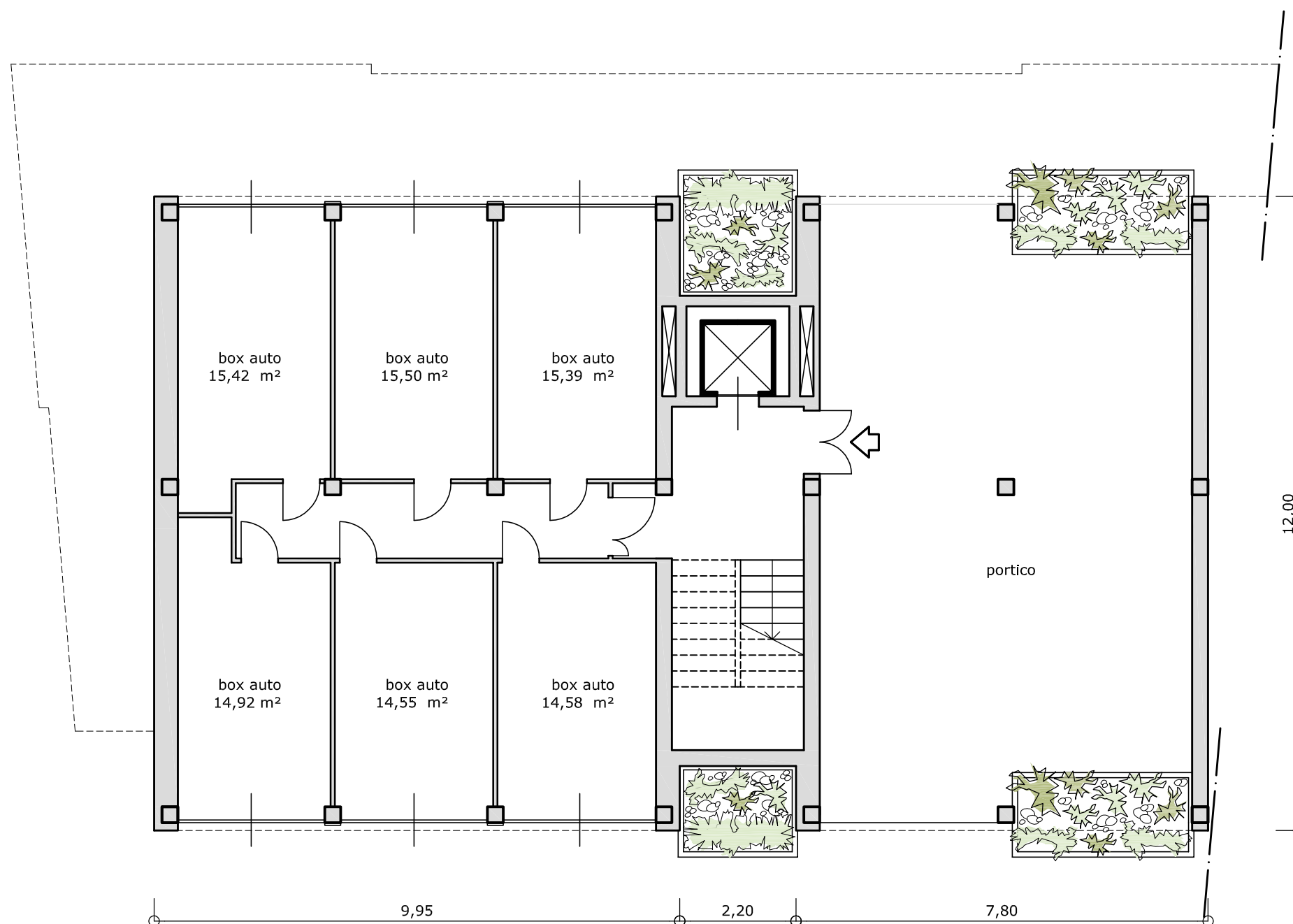
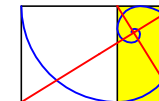


UNITA' IMMOBILIARE TIPOLOGIA A

SUPERFICIE NETTA	m2	95,90
SUPERFICIE COMMERCIALE	m2	116,62
SUL	m2	111,72

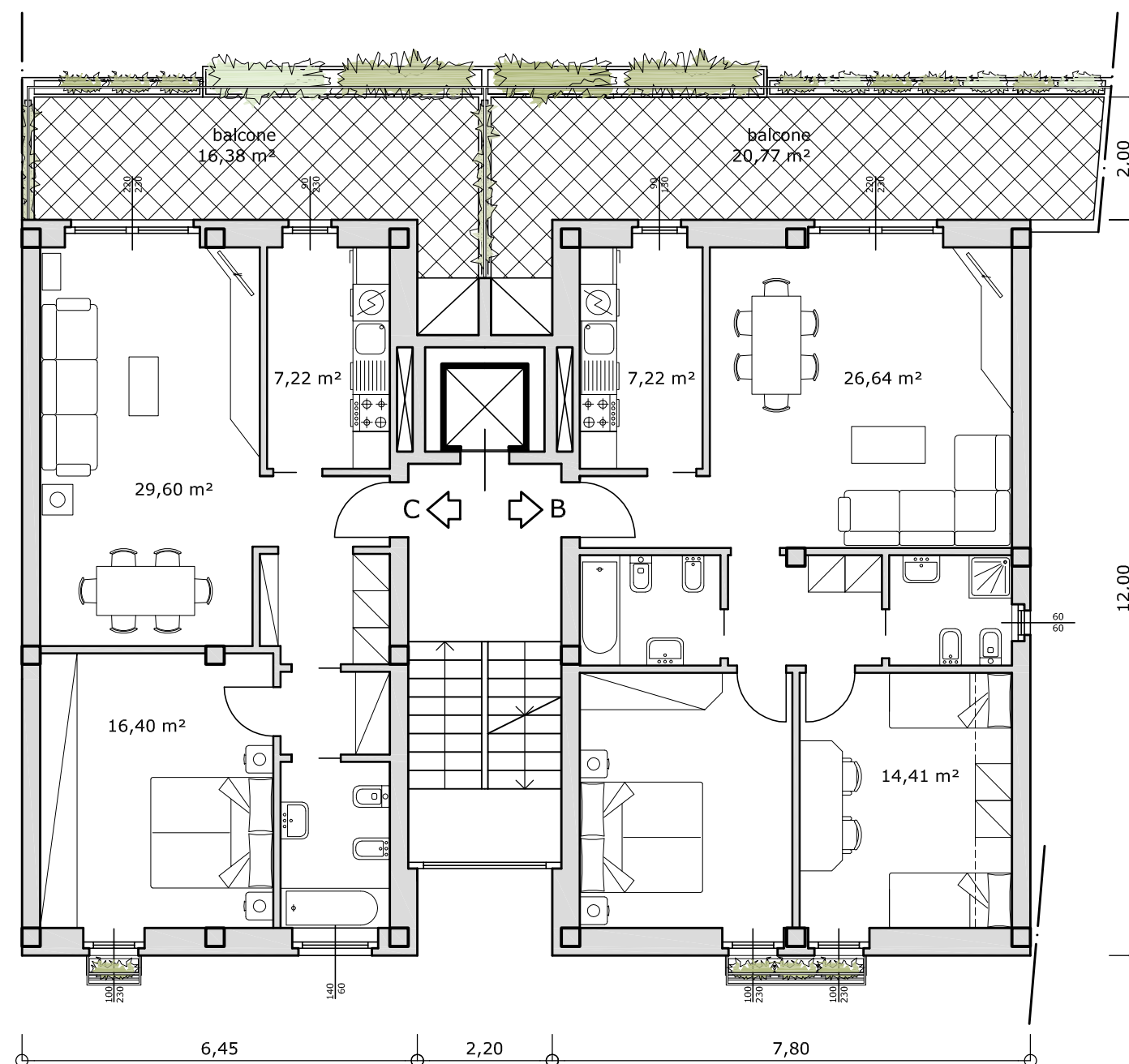
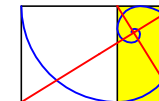
UNITA' IMMOBILIARE TIPOLOGIA B

SUPERFICIE NETTA	m2	75,15
SUPERFICIE COMMERCIALE	m2	92,62
SUPERFICIE SUL	m2	88,42



UNITA' IMMOBILIARE SOVRASTANTE
TIPOLOGIA A

UNITA' IMMOBILIARE SOVRASTANTE
TIPOLOGIA B

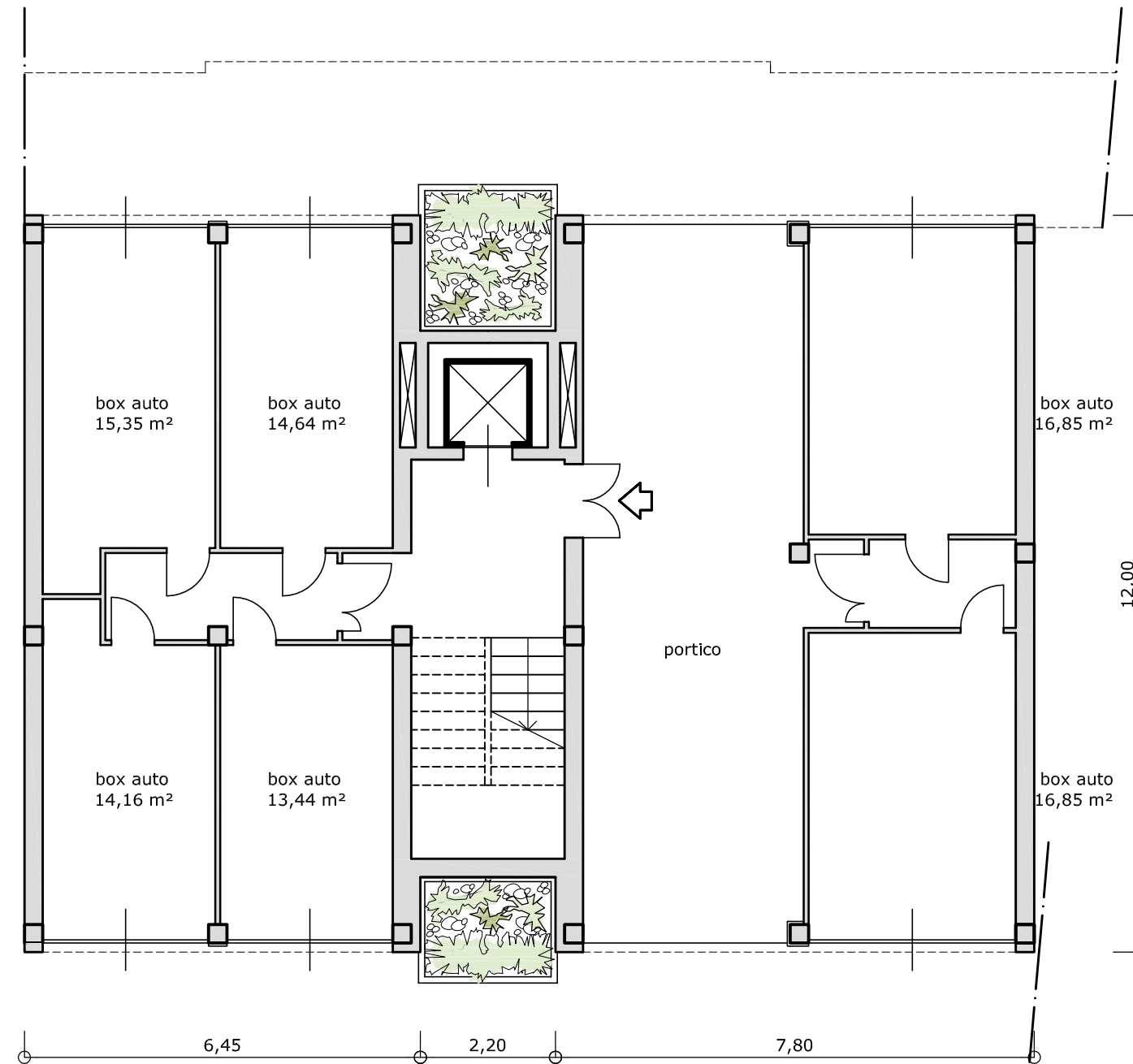
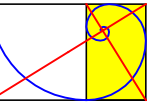


UNITA' IMMOBILIARE TIPOLOGIA C

SUPERFICIE NETTA	m2 60,44
SUPERFICIE COMMERCIALE	m2 76,42
SUL	m2 72,63

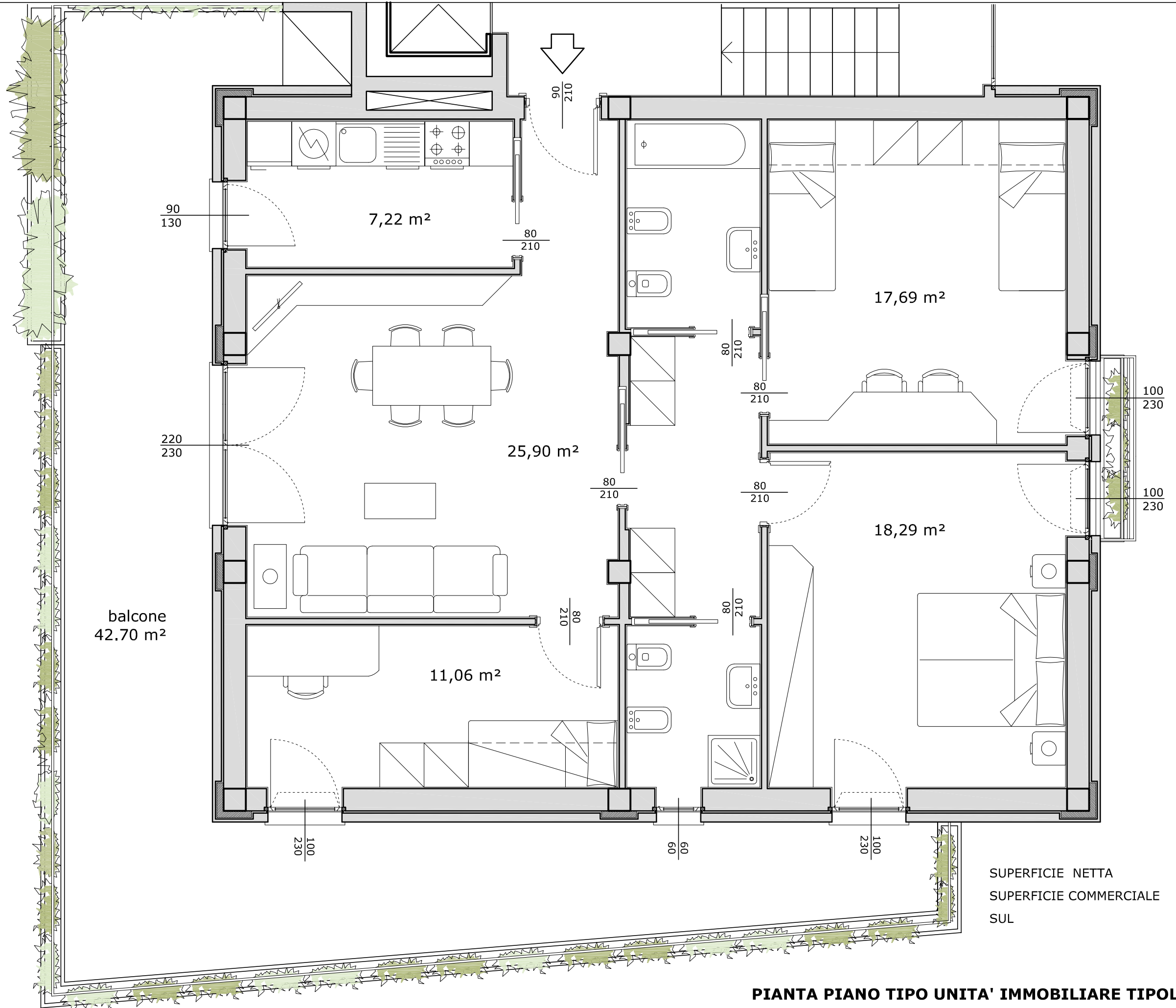
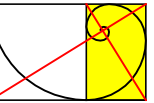
UNITA' IMMOBILIARE TIPOLOGIA B

SUPERFICIE NETTA	m2 75,15
SUPERFICIE COMMERCIALE	m2 92,62
SUPERFICIE SUL	m2 88,42

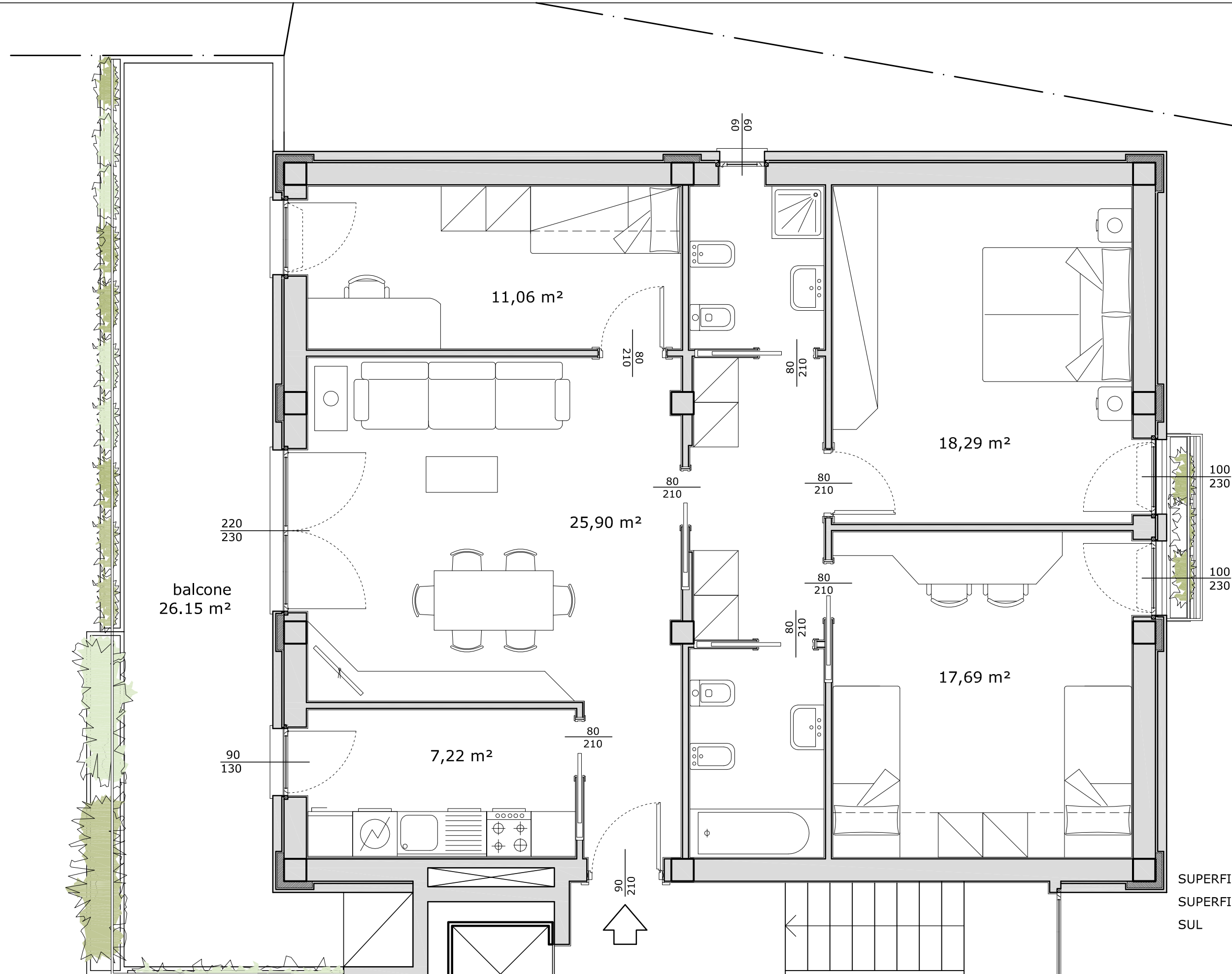
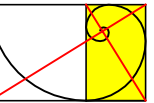


UNITA' IMMOBILIARE SOVRASTANTE
TIPOLOGIA C

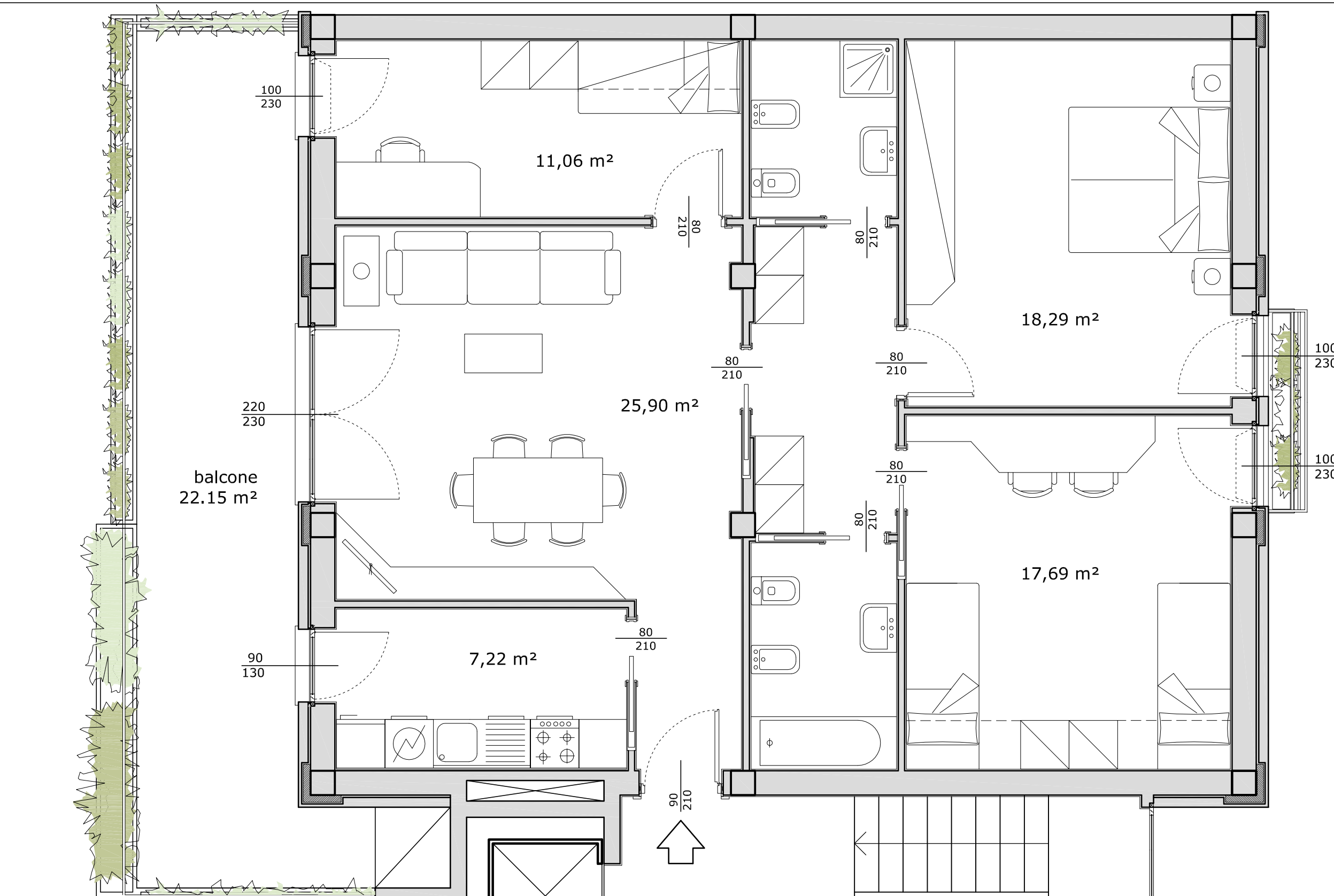
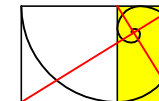
UNITA' IMMOBILIARE SOVRASTANTE
TIPOLOGIA B



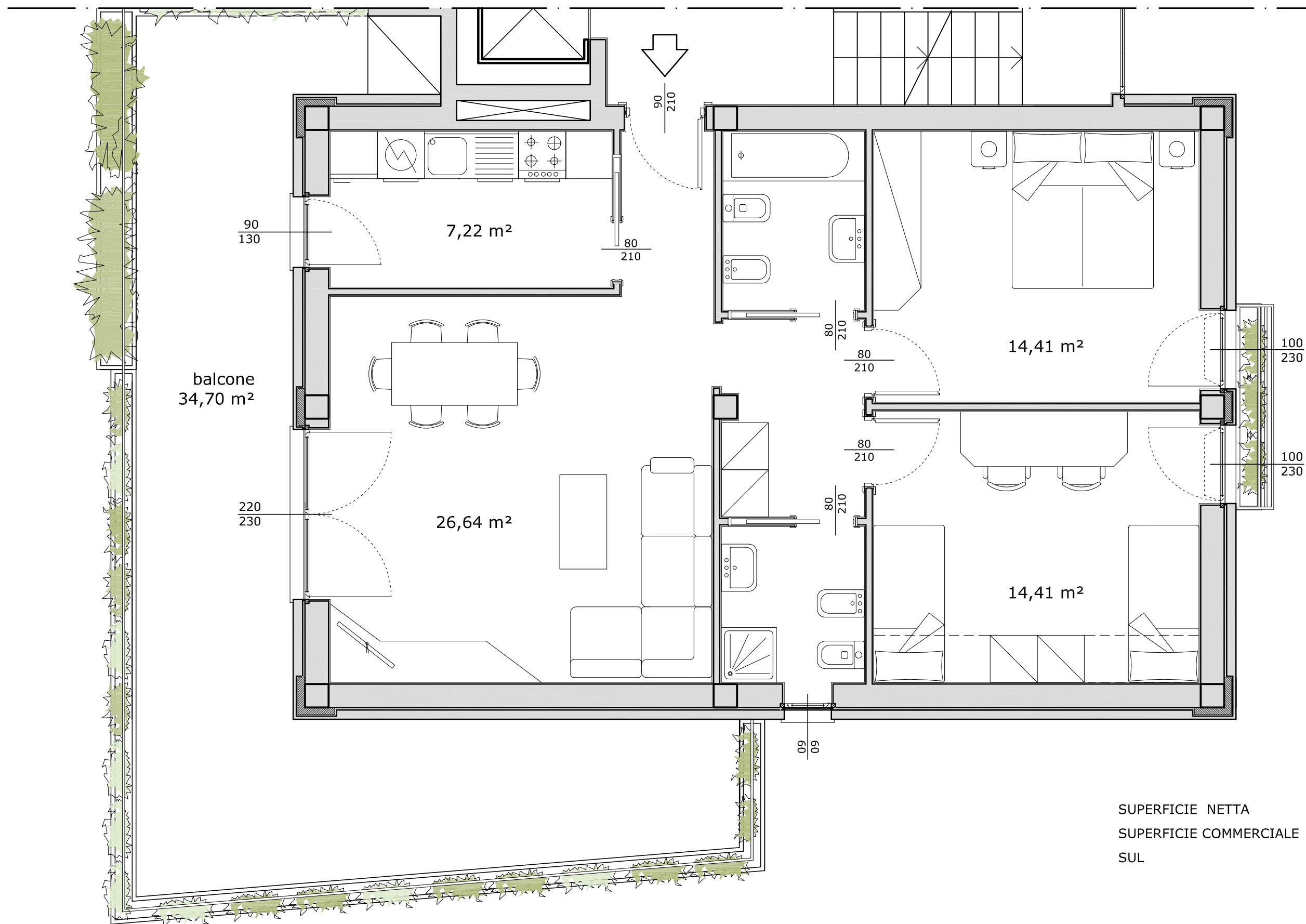
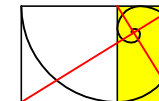
SUPERFICIE NETTA	m2	95,90
SUPERFICIE COMMERCIALE	m2	116,62
SUL	m2	111,72



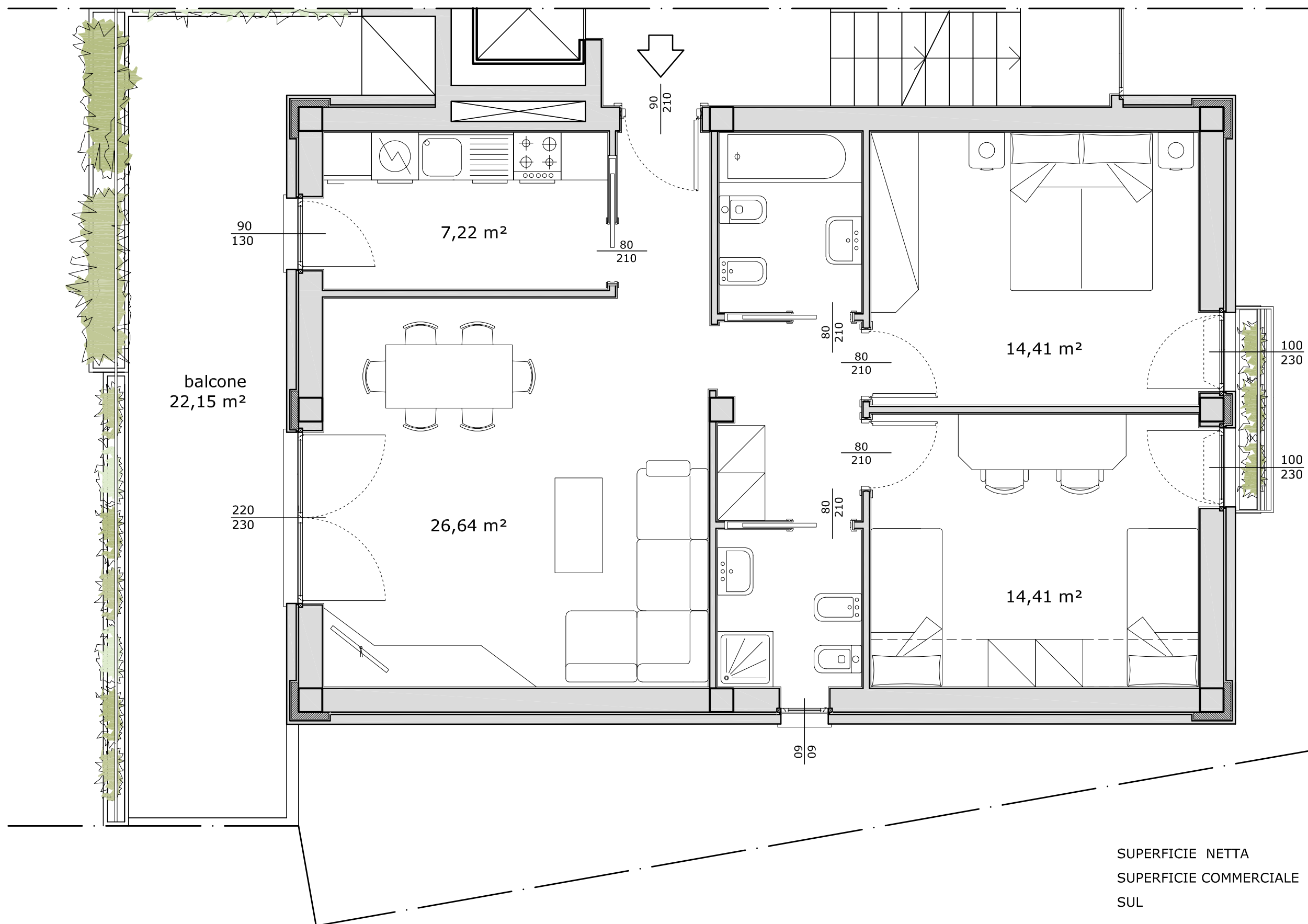
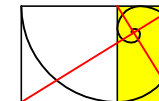
SUPERFICIE NETTA	m2	95,90
SUPERFICIE COMMERCIALE	m2	116,62
SUL	m2	111,72



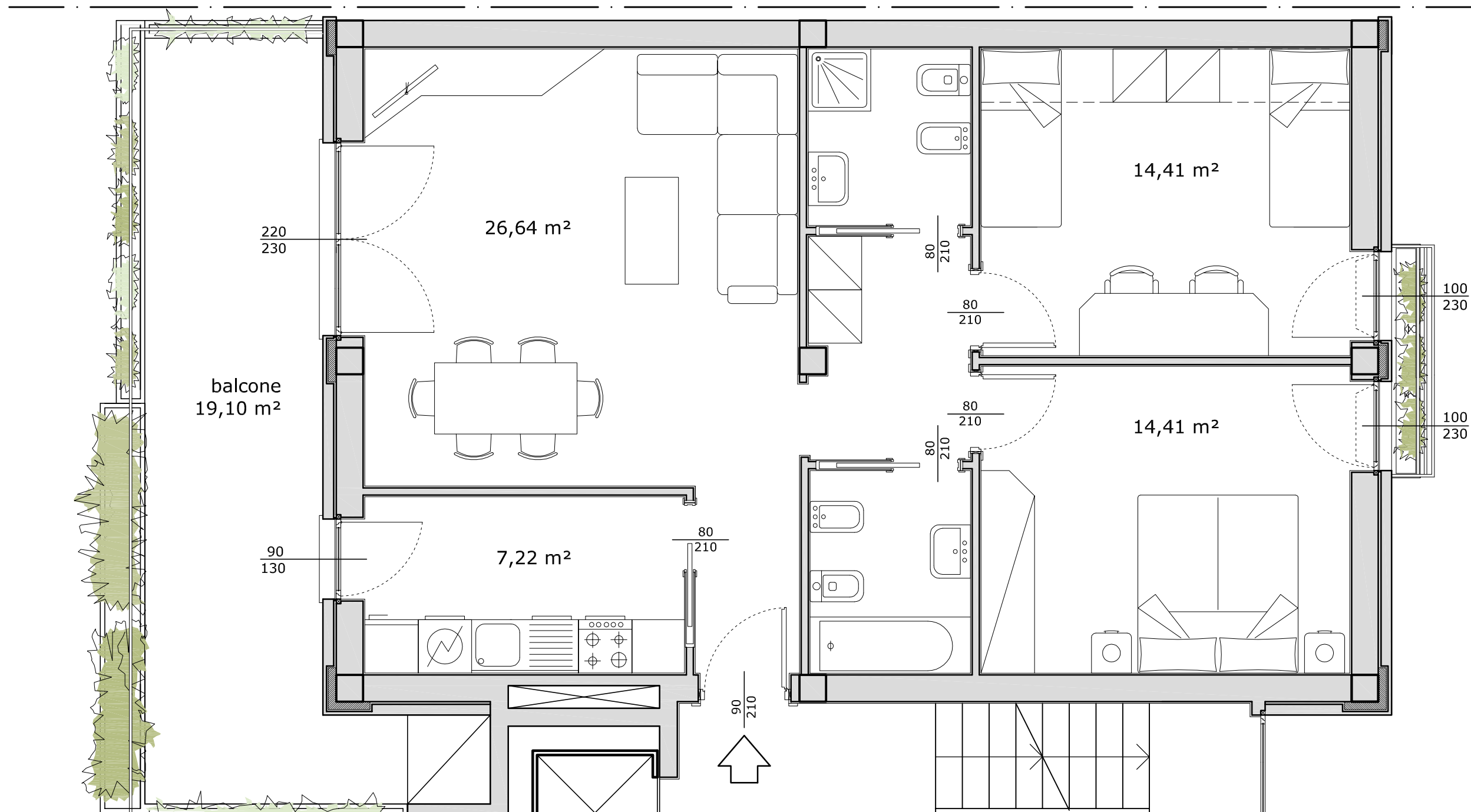
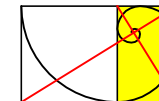
SUPERFICIE NETTA	m2	95,90
SUPERFICIE COMMERCIALE	m2	116,62
SUL	m2	111,72



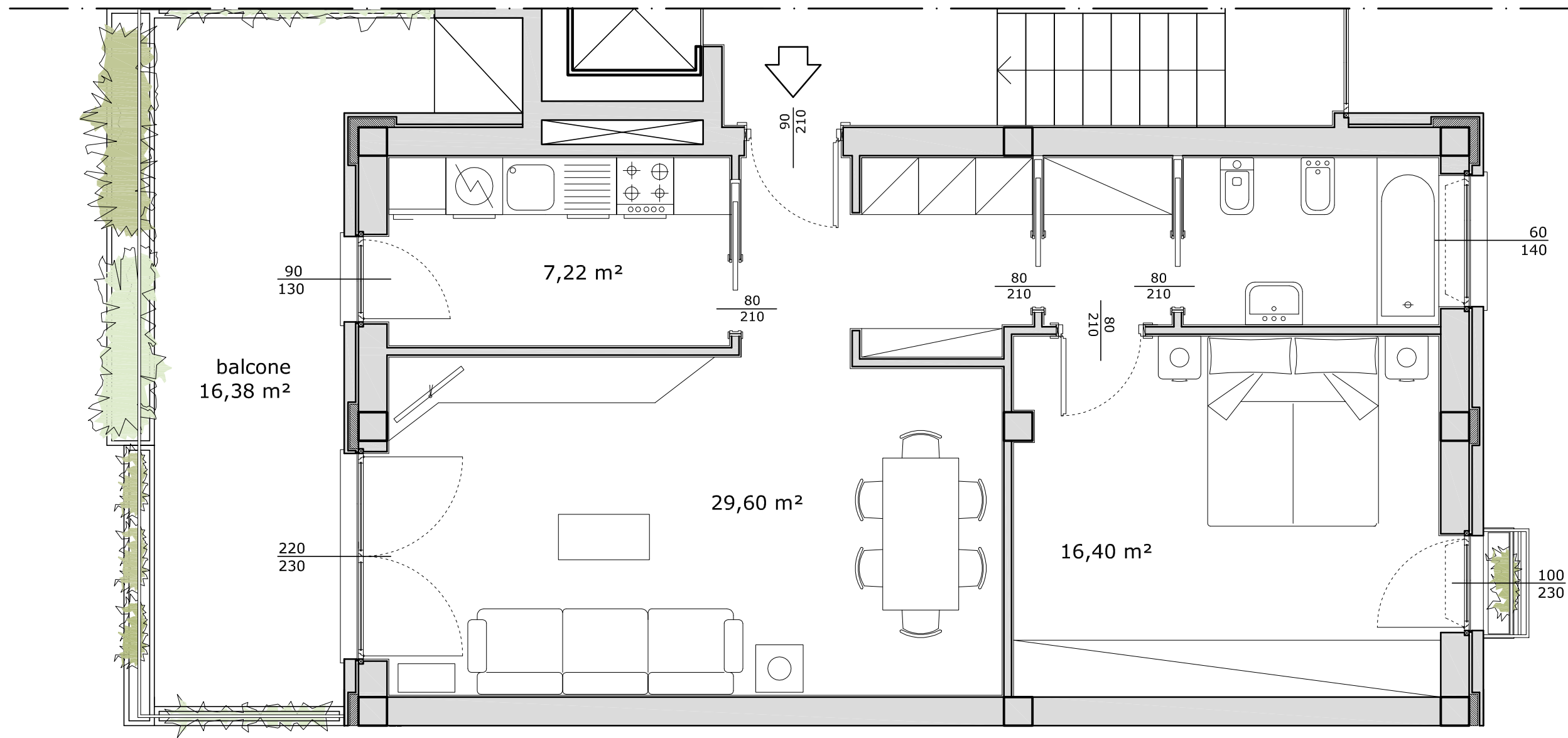
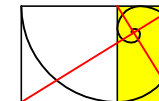
SUPERFICIE NETTA	m2	75,15
SUPERFICIE COMMERCIALE	m2	92,62
SUL	m2	88,42



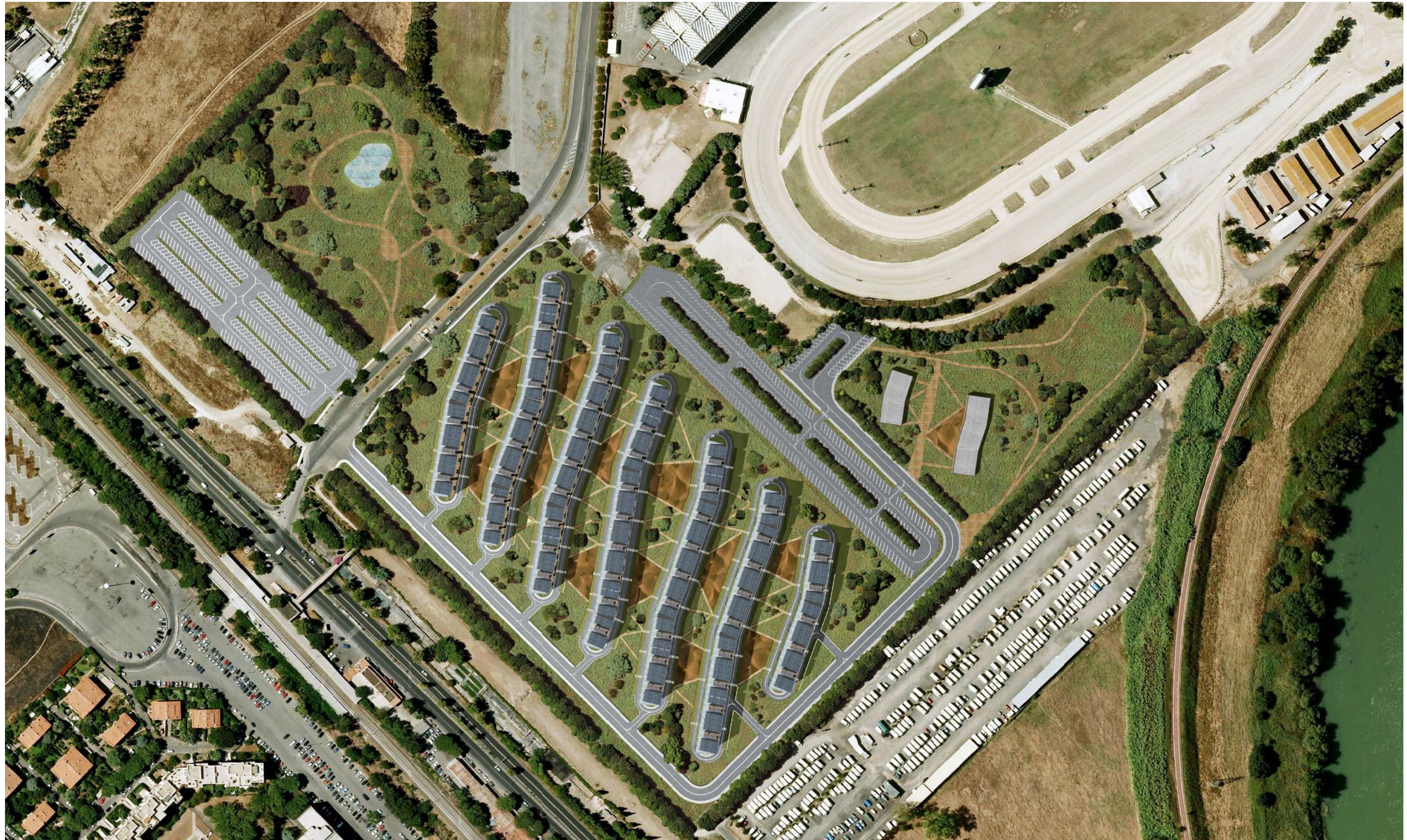
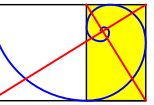
SUPERFICIE NETTA	m2	75,15
SUPERFICIE COMMERCIALE	m2	92,62
SUL	m2	88,42

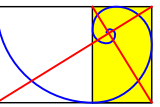


SUPERFICIE NETTA	m2	75,15
SUPERFICIE COMMERCIALE	m2	92,62
SUL	m2	88,42

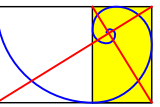


SUPERFICIE NETTA	m2	60,44
SUPERFICIE COMMERCIALE	m2	76,42
SUL	m2	72,63

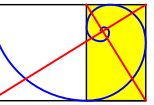




VISTA CORTE INTERNA



VISTA VIA DELL'IPPODROMO TORDIVALLE



VISTA PROSPETTO NORD

